

Donald R. Mellen Surveyor, LLC

22 Center Road
P.O. Box 412
Hillsborough, NH, 03244-0412

Phone (603) 464-3266
Fax (603) 464-3401
Email: mellensurvey@tds.net
Website: www.mellensurvey.com

FIELD WALK GUIDE

PATENAUDE MEADOW – MAP 12A LOT 3 PREPARED AUGUST, 2014



The Patenaude Meadow is a 30-acre property located within the Colonial Heights subdivision. It was conveyed in 2004 by Patenaude-Hillsboro Development, LLC to the Town of Hillsborough for conservation purposes (Bk. 7360, p. 939, HCRD). The property is accessed via two 40-foot-wide strips of land, one on the east side of the property off Jefferson Drive and the other on the west side off Madison Circle. The east access is located between houses at 183 and 189 Jefferson Drive. The west access is located approximately 0.2 miles south of the intersection of Jefferson Drive

and Madison Circle, just north of utility pole 77D/7 361B/7.

At the south end of the property there is 438 feet of frontage on the U.S. Route 202/N.H. Route 9 Bypass. At the north end of the property there is an additional 238 feet of frontage on Jefferson Drive, where the watercourse feeding the meadow passes under the road. This field walk begins along this frontage, at the northeast corner of the property on the south side of Jefferson Drive.

There is attached to this field guide a map of the property with the various lot corners identified alphabetically, beginning at the northeast corner on the south side of Jefferson, identified as "A". There is also included a list of the lot corners as identified on the map together with their approximate latitude and longitude, for those with access to a handheld GPS receiver.



“A” is a 1”x12” rebar with an aluminum cap stamped “Meridian Land Services, Inc” located at the northeasterly corner on Jefferson Drive. It is 3’ northeast of a 3” triple-blazed Red Maple with a HCC marker on the northeast side of the maple as witness. The marker is located approximately opposite the driveway into 100 Jefferson Drive.

Follow the blazed trees in a southeasterly direction 417’ to “B”.

“B” is a 1” diameter rebar
“Meridian Land Services,
triple blazed 22” White

Follow the blazed
285’ to “C”.



with an aluminum cap stamped
Inc” located at the base of a
Pine.

trees in a southeasterly direction



“C” is a ½” diameter rebar with
a red plastic cap stamped “PD Mellen LLS 815”. It is located
approximately 2’ east of an orange fiberglass post with a HCC
marker as witness.

Follow the blazed trees in a southeasterly direction 258 feet to
“D”.



“D” is a drill hole in a 4’x5’x3’ boulder, with an orange fiberglass post with a HCC marker as witness.

Follow the blazed trees in a southeasterly direction 137’ to “E”.



“E” is a drill hole in a boulder at the base of a triple-blazed Hemlock with a HCC marker on the northwest side as witness.

Follow the blazed trees in a southeasterly direction 277’ to “F”.



“F” is a drill hole in a boulder, with an orange fiberglass post with HCC marker as witness.

Follow the blazed trees in a southeasterly direction 168’ to “G”



“G” is a leaning 5/8” diameter rebar with a yellow plastic cap marked “T F Moran” located just east of an orange fiberglass witness post with HCC marker.

Follow the blazed line 200’ southeasterly to “H”



“H” is a ½” diameter, 2” tall rebar with a red plastic cap marked “D MELLE LLS 9” located 3’ east of a triple blazed Hemlock tree with a HCC marker as witness.

Follow the blazed trees and paint on a boulder southeasterly 209’ to “I”

“I” is a ½” diameter rebar with a red plastic cap marked “D MELLE LLS 9” located 1’ east of an orange fiberglass post with a HCC marker as witness. “I” is located on the east side of a Town of Hillsborough Water and Sewer Commission sewer easement.

Follow the sewer easement clearing southeasterly 119’ to “J”





“J” is a ½” diameter rebar with a red plastic cap marked “PD MELLE LLS 815” located 1.2’ east of an orange fiberglass post with HCC marker as witness. It is located just slightly west of the centerline of the Hillsborough S&W Commission sewer easement.

Head easterly, crossing the sewer easement, and follow the blazed line up an incline and across a drainage ditch to “K”

“K” is a ½” diameter 6” marked “PD MELLE triple blazed Hemlock and south of the drainage corner of the 40” wide northeasterly to Jefferson

From “K”, cross the blazed line northeasterly



tall rebar with a red plastic cap marked “PD MELLE LLS 815” located 6’ north of a with a HCC marker as witness ditch. “K” marks the southwest strip of land leading Drive.

drainage ditch and follow the 320’ to “L”



“L” is a ½” diameter rebar with a red plastic cap marked “PD MELLE LLS 815”. It is

located in a landscaped area just southwest of the driveway into the dwelling at 183 Jefferson Drive. The rebar is located 4’ southwest of a granite light post, and the property line passes through the twin Maple shown in the photo at left.

From “L” head southeasterly along the south side of Jefferson Drive 40’ to “M”

“M” is a ½” diameter rebar flush plastic cap marked “PD” located in the lawn area of the Drive, at the right end of the the photo at right. From “M” the 298’ crossing the paved of the shed, about 12’ west of photo and across the backyard



to the ground with a red MELLE LLS 815”. It is dwelling at 189 Jefferson yellow metal detector in line runs southwesterly driveway turnaround, east the garage as shown in the lawn to “N”



“N” is an iron pipe located at the west end of a stone wall, and is the southeast corner of the 40’ wide strip of land leading southwesterly from Jefferson Drive to the main portion of the property. There are two triple blazed Hemlock trees, one with a HCC marker, as witnesses.

From “N” the property line runs southerly crossing a PSNH transmission line and the Hillsborough S&W Commission sewer easement. A green metal witness post with a HCC marker is set on the approximate property line on the north side of the easement, as shown at right.





A green fiberglass post with a HCC marker has been set on the approximate property line on the south side of the PSNH easement, as shown at left. From here the blazed line continues southerly through the beaver flowage to the north end of a stone wall.

If it isn't winter and the east and follow the sewer easement clearing watercourses you will the bypass will be in sight, after crossing the third woods along an old trail the east line of the HCC



actual line is inaccessible, head Hillsborough S& W Commission southerly. After crossing two approach a third watercourse and as shown at right. Immediately watercourse, head west into the up a hill to a stone wall marking property.



The wall runs north along the ridge and then descends into the beaver flow, as shown at left. This area is marked as “O” on the attached map. At this point, turn around and follow the wall and blazes south to “P”

“P” is the junction of the stone fence marking the edge of the bypass.

From this point follow the southwesterly 438’ to “Q”



wall and the highway right of way of the

highway fence and blazes

“Q” is the junction of the highway fence and a stone wall running westerly. The photo at left is looking westerly along the wall toward “R”, the southwest corner of the property.

Follow the wall and blazes westerly 55’ to “R”

“R” is an iron pipe in stones with an orange fiberglass post with a HCC marker as witness. The photo at right looks north along the blazed property line toward “S”, a distance of about 79’.



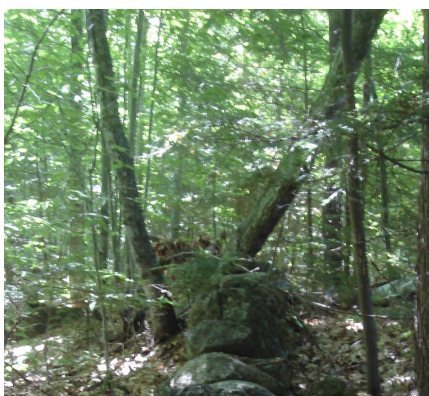


“S” is a 22” diameter Red Oak tree blazed on the north and south sides. From “S” follow the blazed line northerly toward “T”

“T” is the south end of a line of the property. northerly, crossing the



stone wall that marks the west. Follow the wall and blazes PSNH easement, toward “U”



“U” is the northerly end of the stone wall. The photo at left is looking south toward the wall. From this point continue northerly following the blazed line 388’ to “V”

“V” is a ½” diameter rebar with “PD MELLE LLS 815” just fiberglass post with a HCC the southeast corner of the 40’ from Madison Circle. Follow



a red plastic cap marked southwest of an orange marker as witness. “V” is wide access to the property the blazed line westerly...



...and you will encounter a storage shed straddling the property line. The shed appears to be appurtenant to the property at 36 Madison Circle. Continue west toward “W”...

“W” is a 4”x4”x4” stone bound located 3.5’ north of utility pole 77D/7 361B/7. There is no land surveyor’s identification on the bound and no magnet was detected, so it may have been set by a landowner. “W” is the southwest corner of the 40’ access from Madison Circle.



From this point head northerly on the east side of Madison Circle 40' to "X"



"X" is a rebar with aluminum cap marked "Meridian Land Services, Inc." set flush in the lawn of property at 28 Madison Circle. It is the northwest corner of the 40' access from Madison Circle.



Follow the blazed line easterly 263' to "Y", a rebar with aluminum cap marked "Meridian Land Services, Inc." about 1' northwest of an orange fiberglass post with a HCC marker as witness. "Y" is the northeast corner of the access strip from Madison Circle. From here follow the blazed line northerly, crossing the lawn in the backyard of 28 Madison Circle, a distance of 347' to "Z"



"Z" is a rebar with aluminum cap marked "Meridian Land Services, Inc." Continue north following the blazed line 210' to "AA"



"AA" is a rebar with aluminum cap marked

“Meridian Land Services, Inc.” located west of a triple blazed Hemlock with a HCC marker as witness.

From this point follow the blazed line northwesterly 240’ to “BB”



“BB” is a rebar set in a stump with an aluminum cap marked “Meridian Land Services, Inc.” located westerly of a triple blazed Hemlock with a HCC marker as witness.

From this point follow the blazed northwesterly 284’ to “CC”

“CC” is a rebar with aluminum cap marked “Meridian Land Services, Inc.” located west of an orange fiberglass post with a HCC marker as witness.

From this point follow the blazed line northerly 147’ to “DD”



“DD” is a rebar with aluminum cap marked “Meridian Land Services, Inc.” located west of an orange fiberglass post with a HCC marker as witness.

From this point follow the blazed line northerly over a stump dump, across the edge of the meadow and over a pile of boulders to “EE”

“EE” is a rebar with an aluminum cap marked “Meridian Land Services, Inc.” located northwest of an orange fiberglass post with a HCC marker as witness. “EE” is the property. From this point proceed easterly along



Jefferson Drive 238' to the place